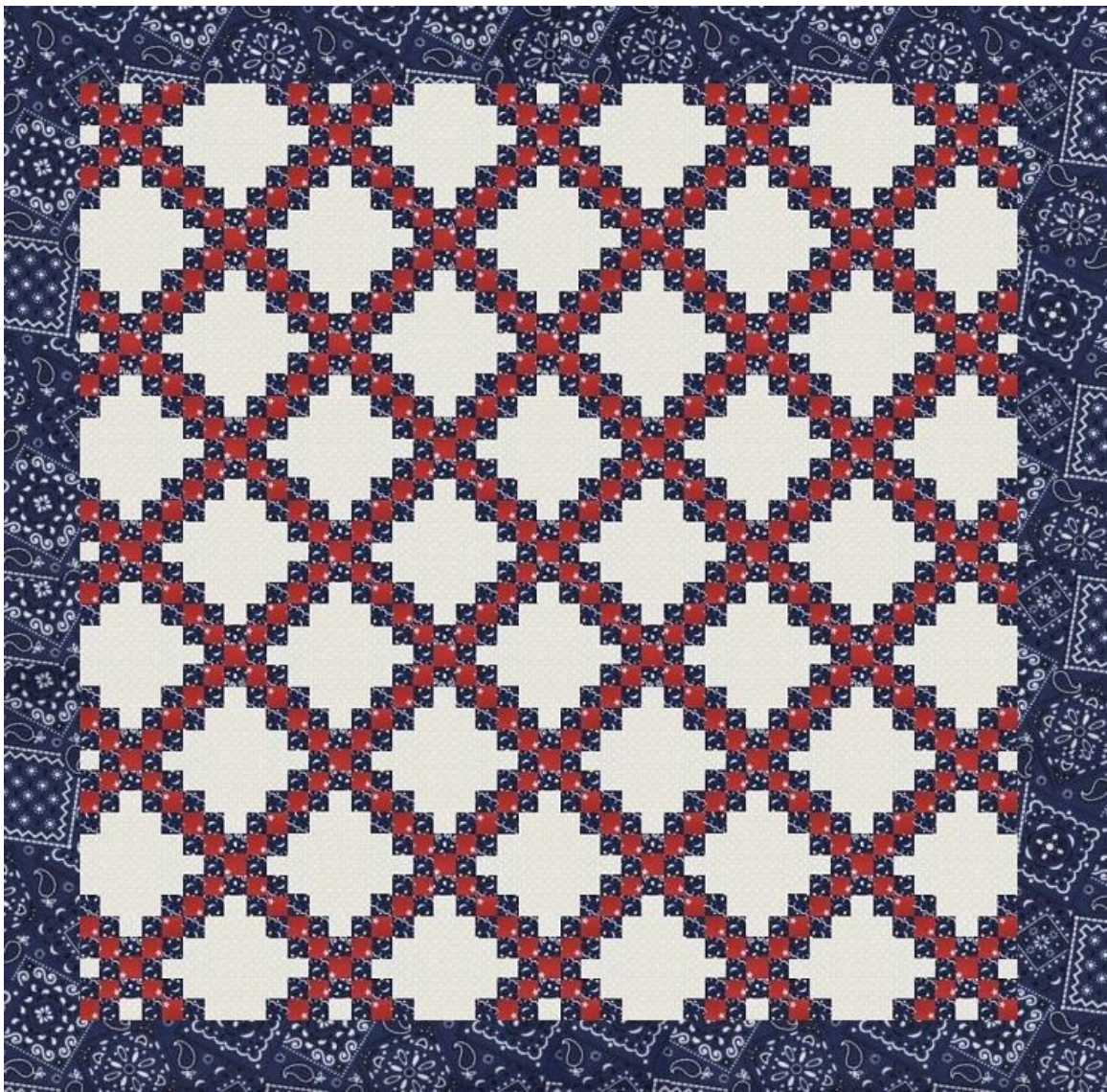


Jelly Roll 2-Color Double Irish Chain Tutorial

(Four Sizes)

By Liz Katsuro, copyright October 2015



King size in [navy](#) and [red](#)!

Here's an easy tutorial for how to make an entire 2-Color Double Irish Chain quilt top using nothing but 2.5" jelly roll strips! This one uses 2 main colors – as opposed to just one in the [“Floating Double Irish Chain” tutorial](#).

What you'll need:

Baby Size – 50” x 50”

5 main color A fabric strips (Fabric A) (middle chain)

14 main color B fabric strips (Fabric B)

16 background fabric strips (Fabric C)

Baby Shopping list: (1) 20-strip Fabric A [main color jelly roll](#); (1) 20-strip Fabric B [main color jelly roll](#); (1) 20-strip Fabric C or [white jelly roll](#)

*you will have enough of Fabrics A & B for border/binding

Throw Size – 70” x 70”

18 main color A fabric strips (Fabric A) (middle chain)

28 main color B fabric strips (Fabric B)

32 background fabric strips (Fabric C)

Throw Shopping list: (1) 20-strip Fabric A [main color jelly roll](#); (2) 20-strip Fabric B [main color jelly rolls](#); (2) 20-strip background Fabric C or [white jelly rolls](#)

*you will have enough of Fabric B for border OR binding

Queen Size – 90” x 90”

27 main color A fabric strips (Fabric A) (middle chain)

42 main color B fabric Strips (Fabric B)

51 background fabric strips (Fabric C)

Queen Shopping List: (2) 20-strip Fabric A [main color jelly rolls](#) ; (3) 20-strip Fabric B [main color jelly rolls](#); (3) 20-strip background or [white jelly rolls](#).

*you will have enough of Fabrics A & B for border/binding on both queen and (inner border) on either of the king sizes

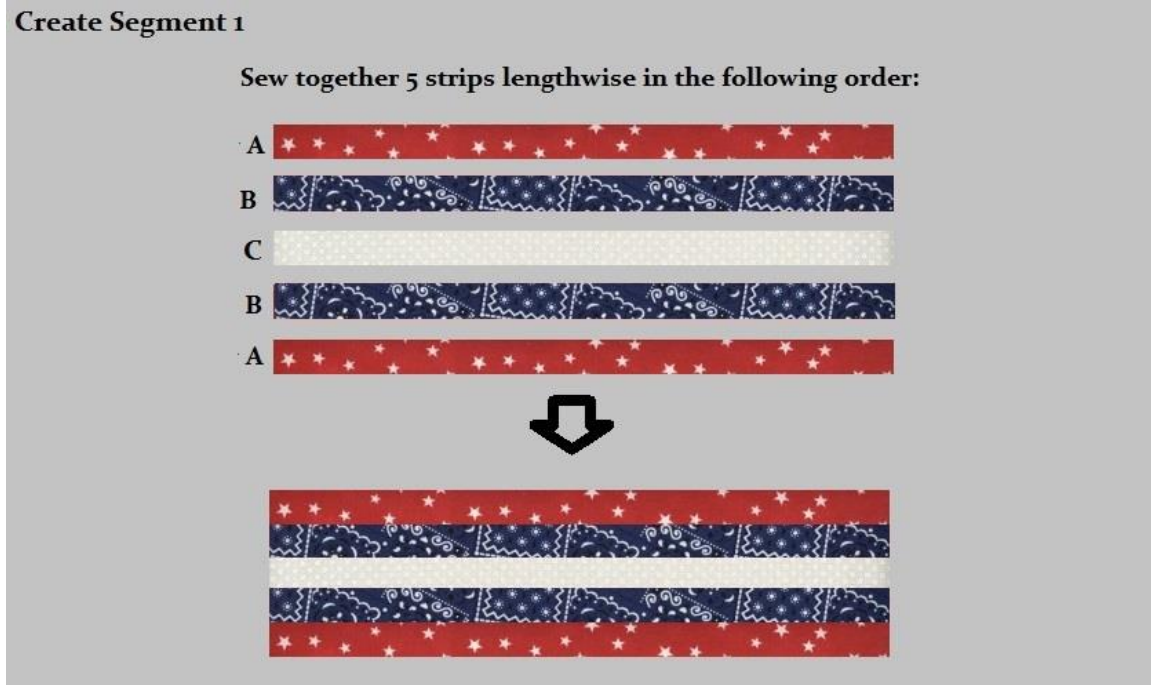
King Size – 100”x 100” – same as queen size, but add [1 ¼ yards of fabric](#) to create a 5” border.

Larger King Size – 110” x 110” – same as queen size, but add [2 ½ yards of fabric](#) to create a 10” border.

[Single Fabric/Binding Strip Rolls](#) are PERFECT for the 2-color Double Irish Chain, as well as [Basic Color Rolls](#)!

Instructions

Ready to Sew?



Baby Size – Make 2.

Throw Size – Make 4.

Queen/King Size – Make 6.

Create Segment 2

Sew together 5 strips lengthwise in the following order:



Baby Size – Make 2.

Throw Size – Make 4.

Queen/King Size – Make 6.

Create Segment 3

Sew together 5 strips lengthwise in the following order:



Baby Size – Make 1.

Throw Size – Make 2.

Queen/King Size – Make 3.

Create Segment 4

Sew together 5 strips lengthwise in the following order:



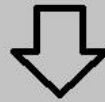
Baby Size – Make 1.

Throw Size – Make 2.

Queen/King Size – Make 3.

Create Segment 5

Sew together 3 strips lengthwise in the following order:



Baby Size – Make 3.

Throw Size – Make 6.

Queen/King Size – Make 10.

Ready To Cut?

Cut Segment 1

Trim selvage edge, and cut 2.5" segments



Cut Segment 2

Trim selvage edge, and cut 2.5" segments



Cut Segment 3

Trim selvage edge, and cut 2.5" segments



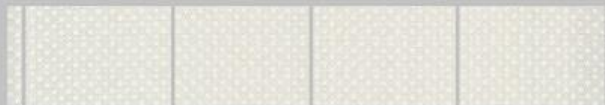
Cut Segment 4

Trim selvage edge, and cut 2.5" segments



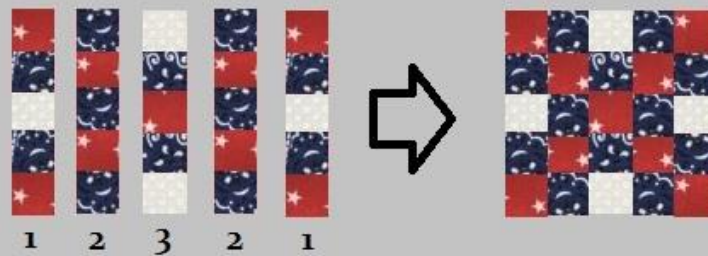
Cut Segment 5

Trim selvage edge, and cut 10.5" segments



Assemble Block 1

Sew segments 1, 2 and 3 together in this order:



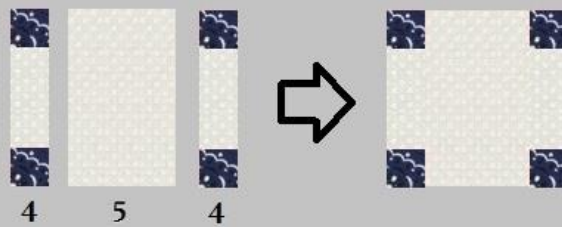
Baby Size – Make 13.

Throw Size – Make 25.

Queen/King Size – Make 41.

Assemble Block 2

Sew segments 4 and 5 together in the following order:

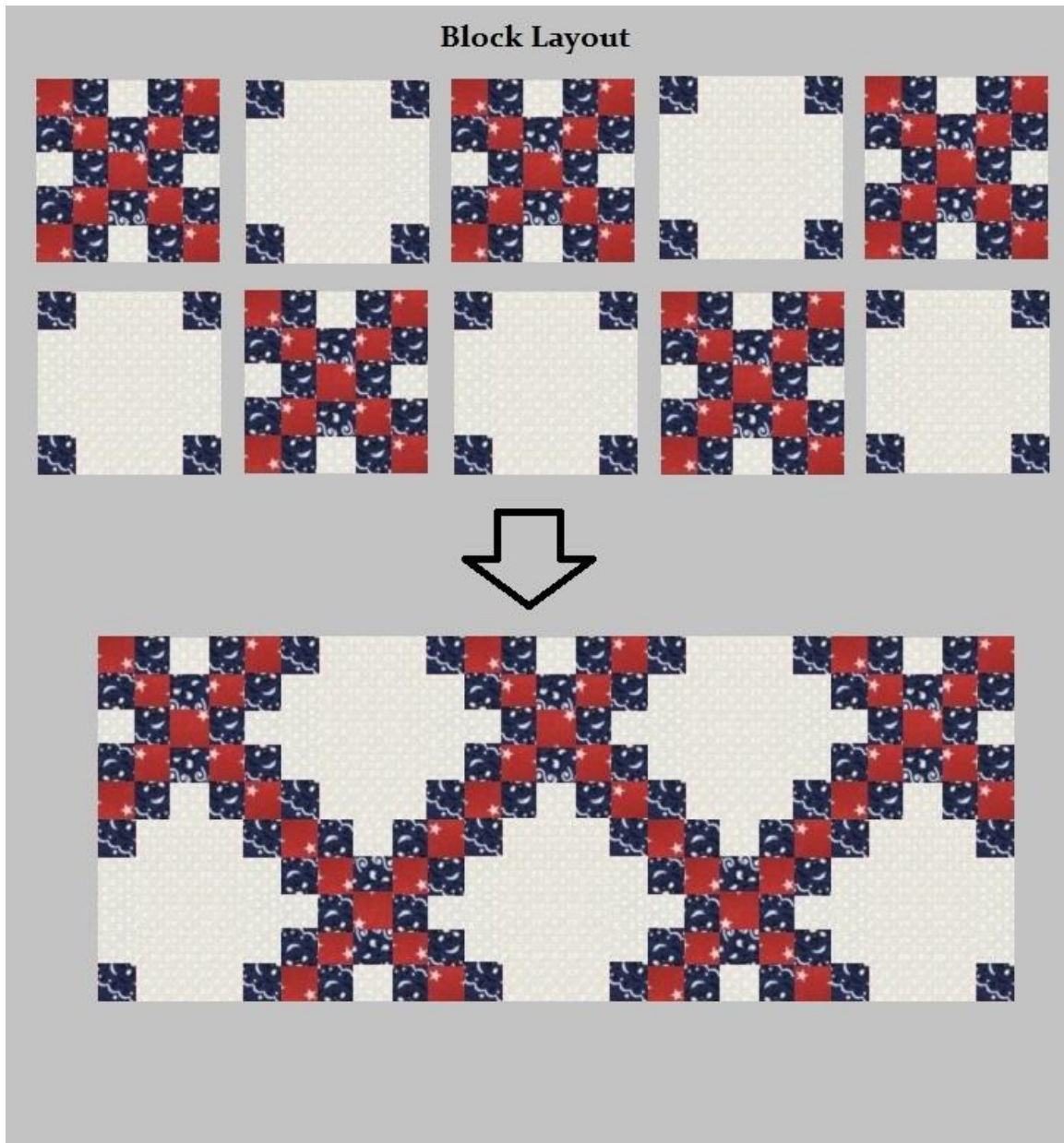


Baby Size – Make 12.

Throw Size – Make 24.

Queen/King Size – Make 40.

Ready to Assemble?



Baby Size – blocks will be laid out 5 x 5 (shown).

Throw Size – blocks will be laid out 7 x 7.

Queen/King Size – blocks will be laid out 9 x 9.

BABY SIZE – 50 x 50



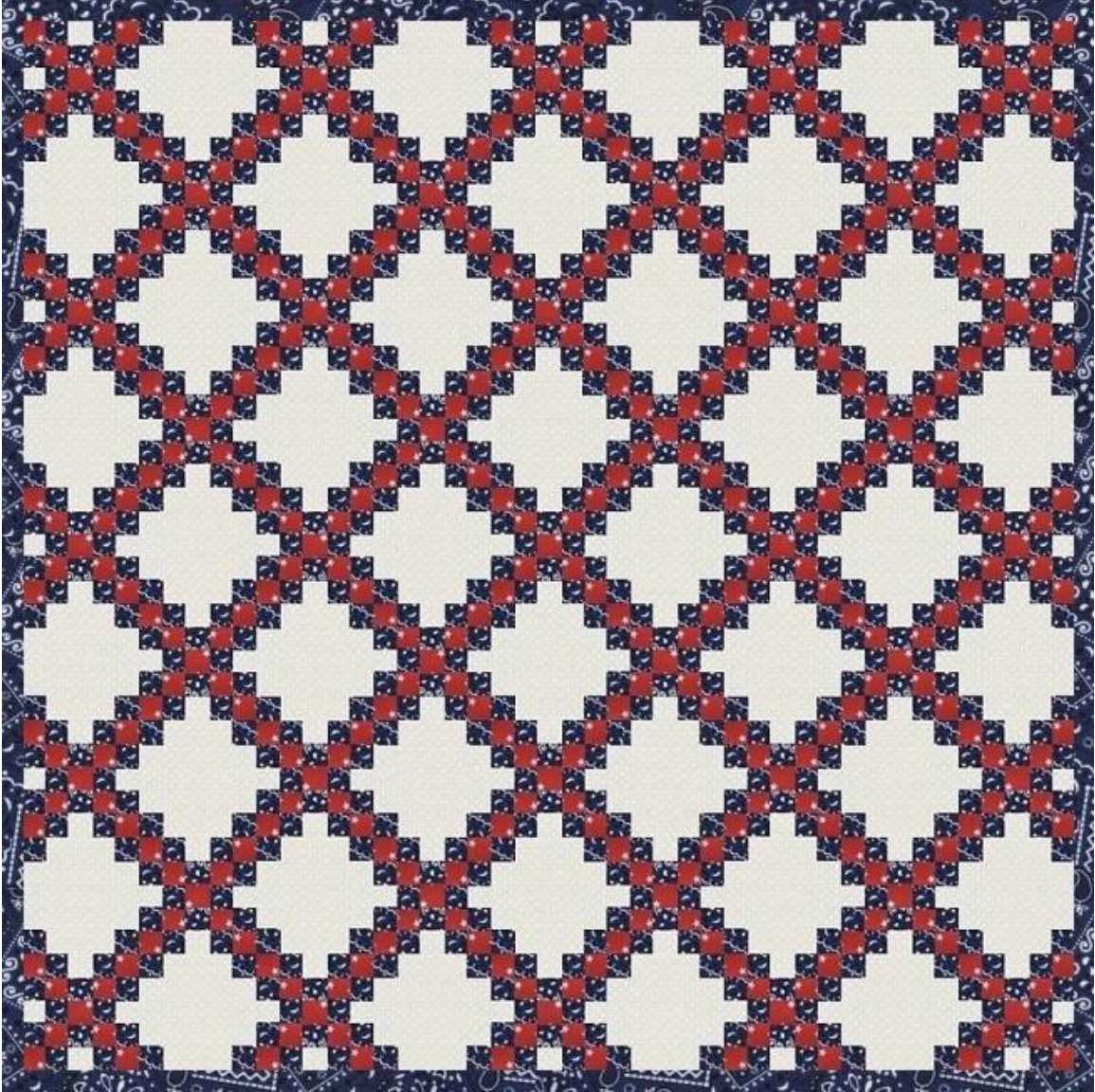
Shown with 1-strip border and binding

LARGE THROW SIZE – 72” x 72”



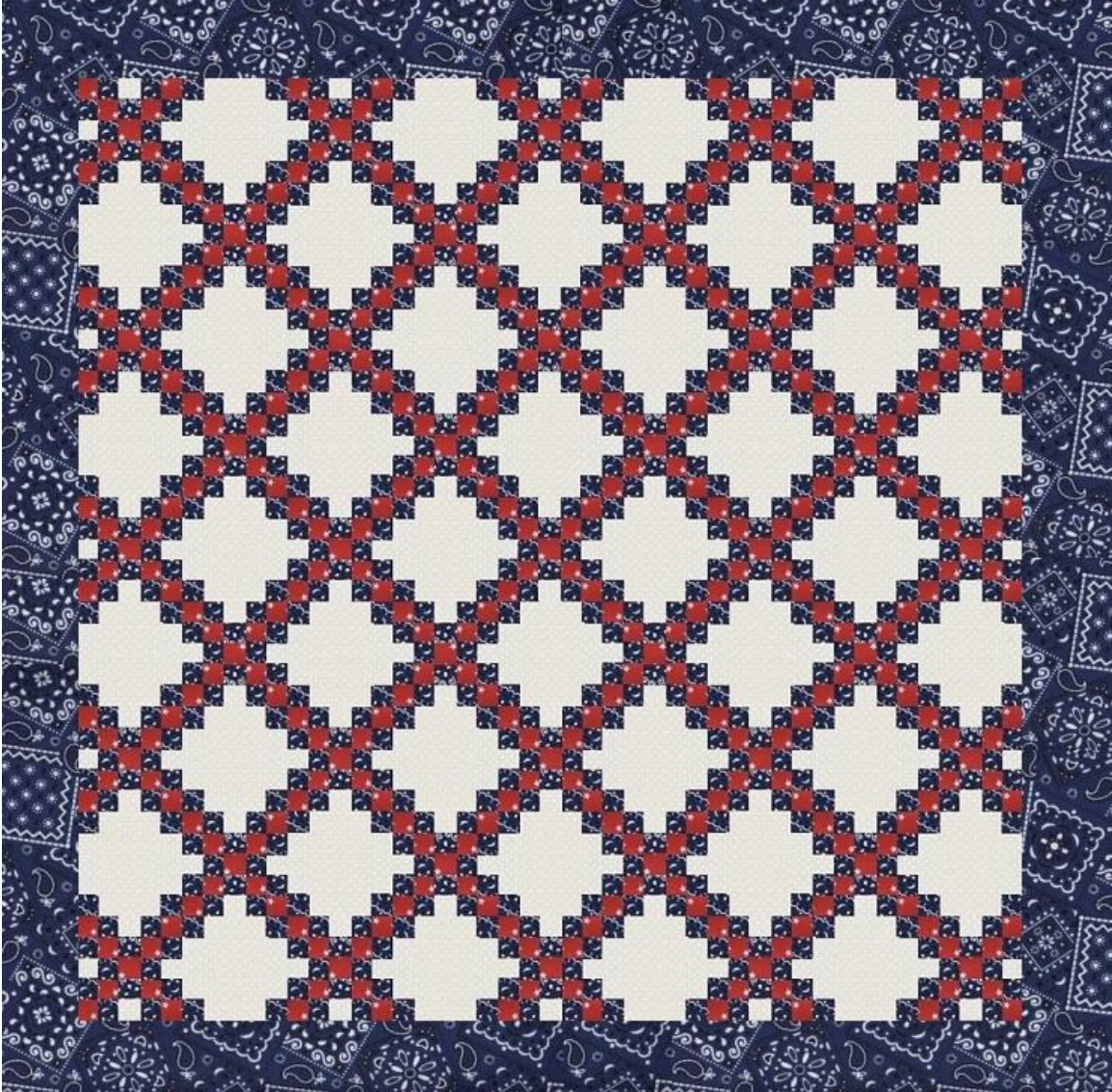
Shown with 1-strip border

QUEEN SIZE – 90” x 90”



Shown with 1-strip border

KING SIZE – 100” x 100”



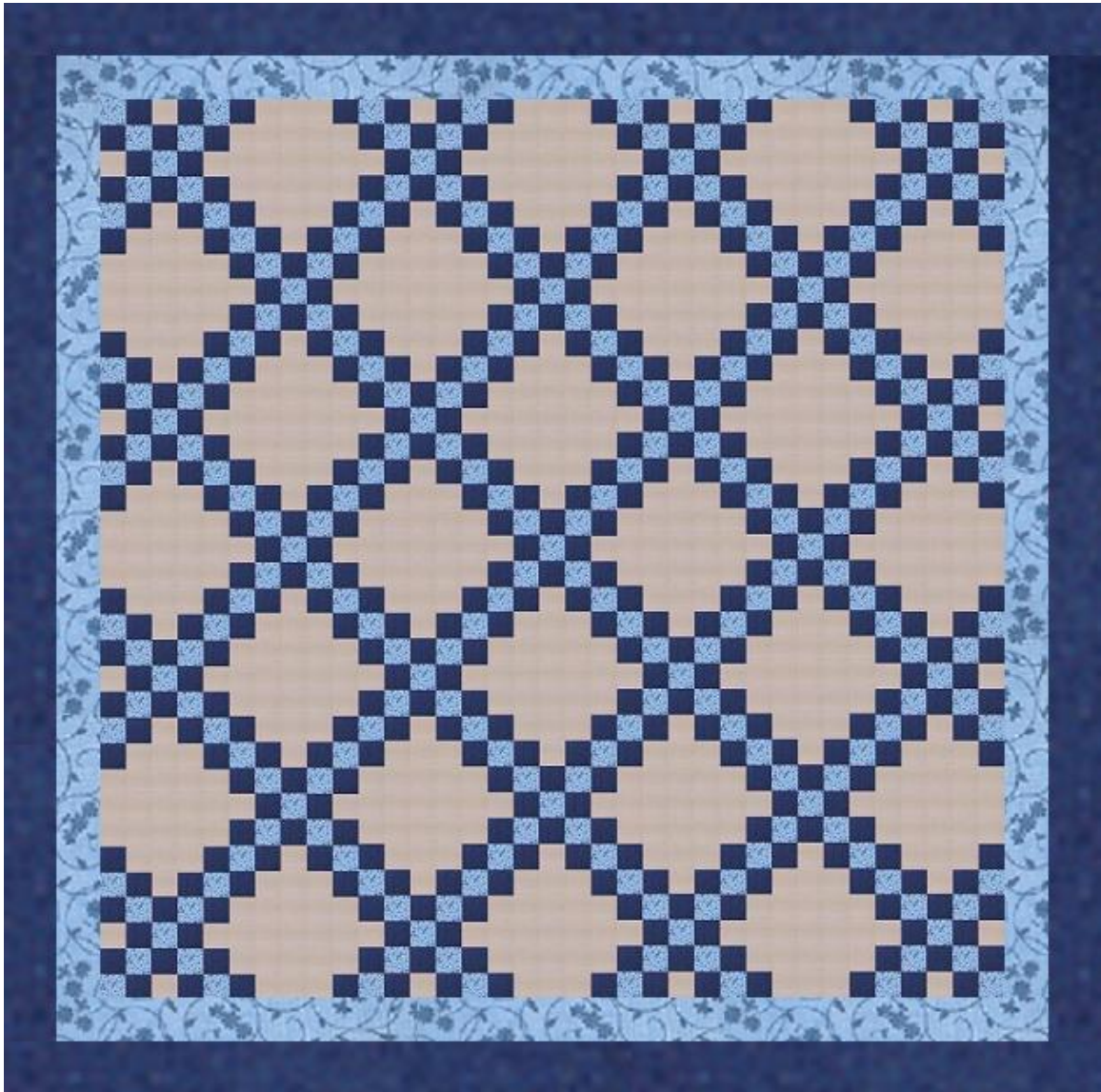
Shown with 10” [yardage border](#) (110” x 110”)

100”x 100” – approximately [1 ¼ yards](#) needed for 5” border

To enlarge to 110” x 110”, replace 5” border with 10” border – approximated [2 ½ yards](#) needed for border

Create border by cutting fabric selvage to selvage and then sewing long strips.

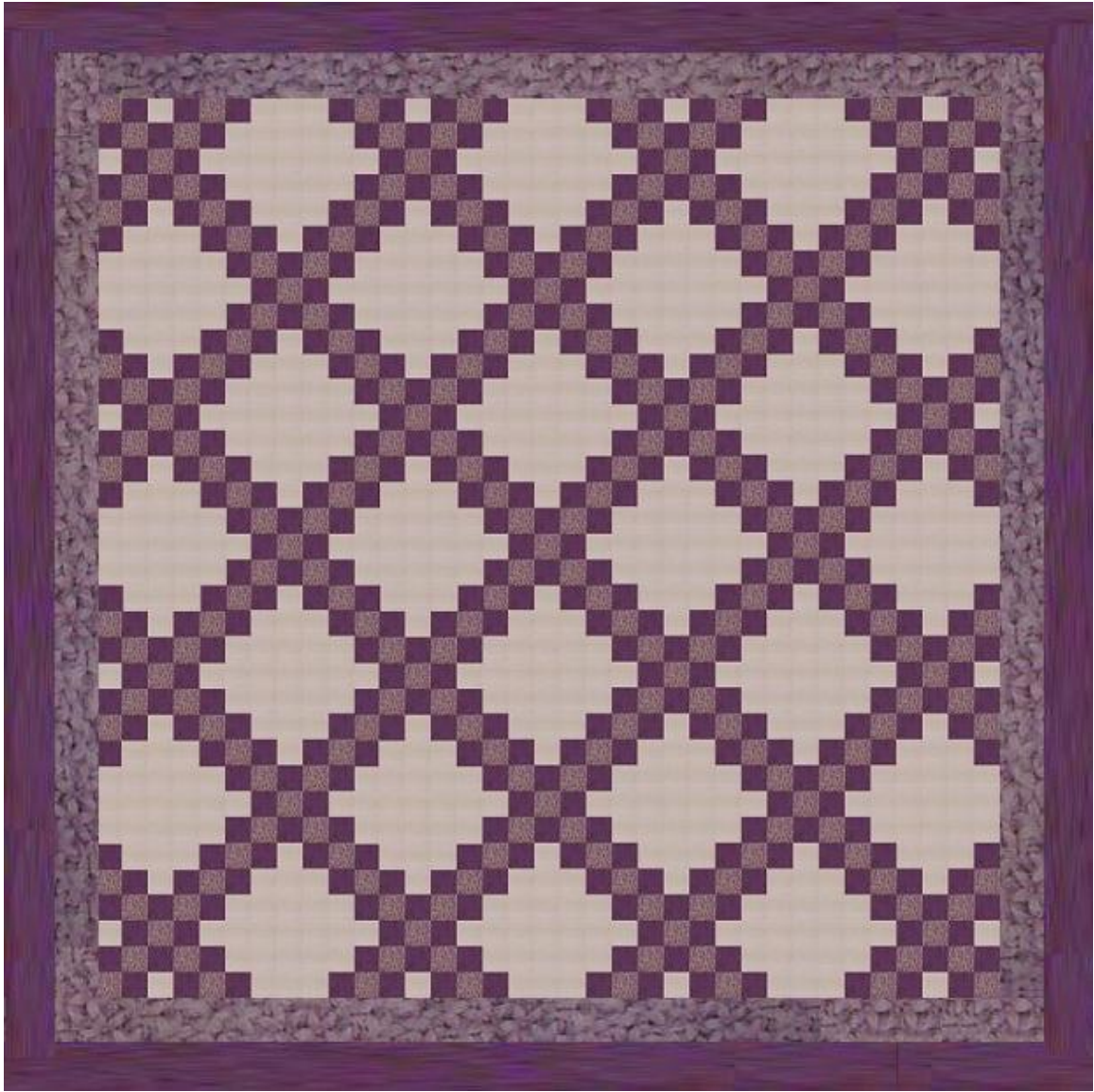
Color Samples:



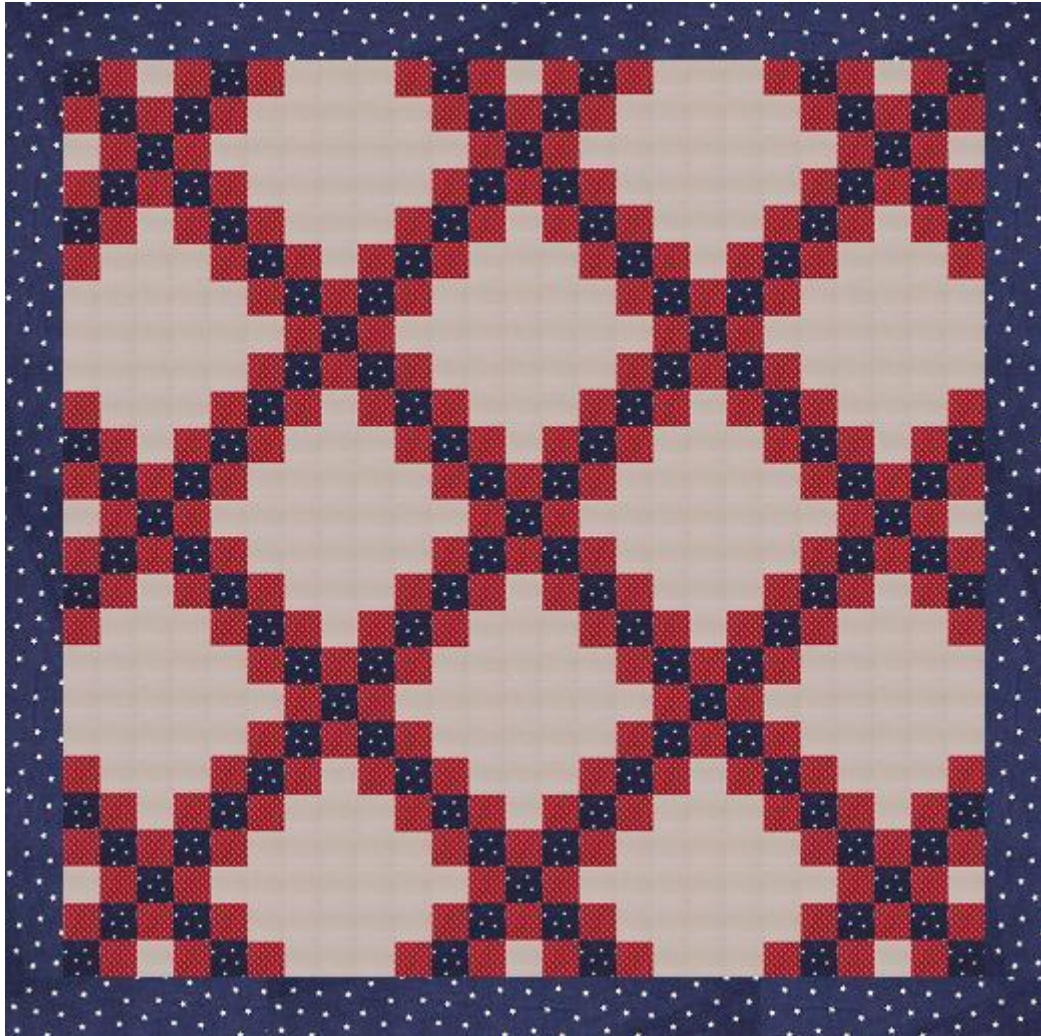
[Dark Blues](#) & [Light Blues](#)



[Reds & Greens](#)

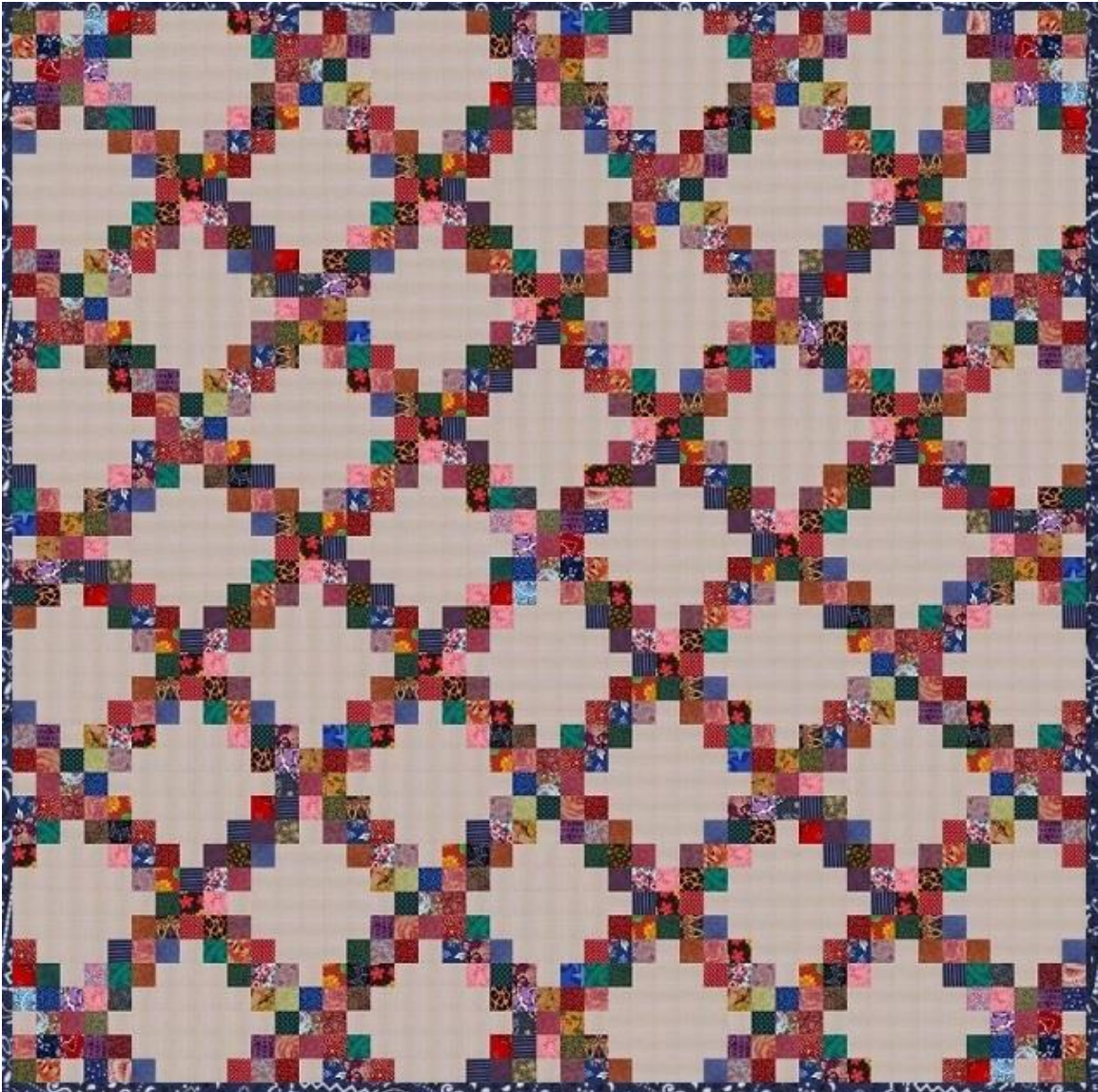


[Purples & Lavenders](#)



Reds and Dark Blues (Colors reversed from above!)

And Scrappy/Mixed Colors (try with [Spectrum](#) Rolls or [Mixed Bandana Prints!](#))



Hope you enjoyed this little tutorial!

Liz K., <http://jellyrollfabric.net>

[Like us on Facebook!](#)

[Follow me on Pinterest!](#)