

# JEWEL BOX

By Liz Katsuro  
Copyright November 2015



Jewel Box in [solid white](#), [solid black](#) and [Floral Twirl 10-Colorway](#) fabrics!

This very easy variation of the Rail Fence Block is perfect for beginners and seasoned quilters alike!

## What you'll need:

### **BABY – 56” x 56” – 16 blocks laid out 4x4**

10 solid white strips, 10 solid black strips, 20 10-Colorway strips

**Shopping list:** [1 solid white roll](#), [1 solid black roll](#), [1 10-colorway roll](#) or [nursery roll](#) (can also replace solid black with [mixed naturals](#) for a baby quilt)

### **THROW – 70” x 70” – 25 blocks laid out 5x5**

16 solid white strips, 14 solid black strips, 35 10-Colorway strips

**Shopping list:** [1 solid white roll](#), [1 solid black roll](#), [2 10-Colorway rolls](#)

### **QUEEN – 98” x 98” – 49 blocks laid out 7x7**

30 solid white strips, 28 solid black strips, 65 10-Colorway strips

**Shopping list:** [2 solid white rolls](#), [2 solid black rolls](#), [4 10-Colorway rolls](#)

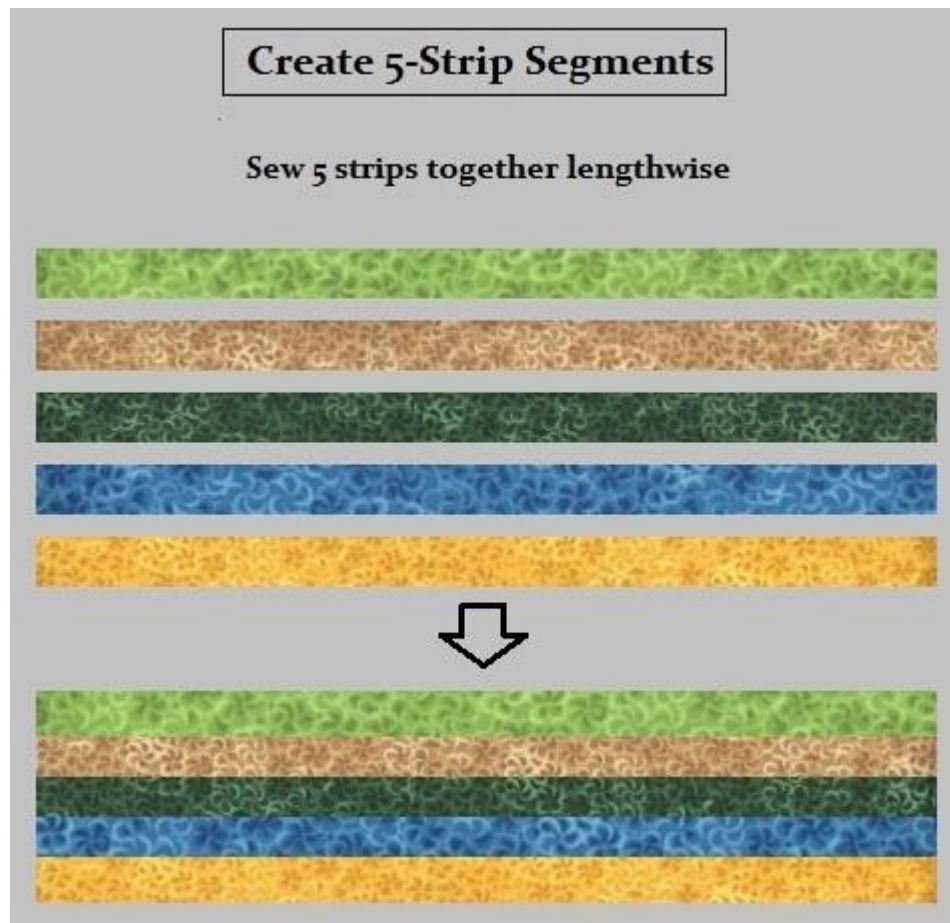
### **KING – 108” x 108”**

Same as queen – add 5 ¼” [yardage border](#)

**Shopping list:** [2 solid white rolls](#), [2 solid black rolls](#), [4 10-colorway rolls](#), 1.5 yards [border fabric](#)

Above does not include binding, batting or backing fabric!

# INSTRUCTIONS



Repeat with other 5 colors.

Baby: make 2 of each set

Throw: make 3 of one set, 4 of the other

Queen/King: make 7 of one set, 6 of the other

### Cut Blocks

Trim selvage edge from one side and cut 10.5" blocks - you will get 4 from each set



Repeat with other set(s).

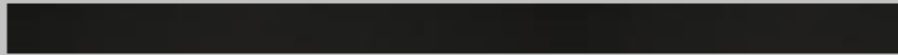
Baby: cut 8 blocks of each

Throw: cut 13 blocks of set 1 and 12 blocks of set 2

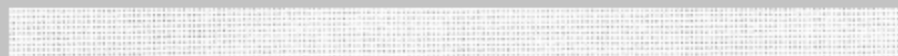
Queen/King: cut 25 blocks of set 1 and 24 blocks  
of set 2

### Cut block "frames"

From black strips, cut 10.5" segments and 14.5" segments



From white strips, cut 10.5" segments and 14.5" segments



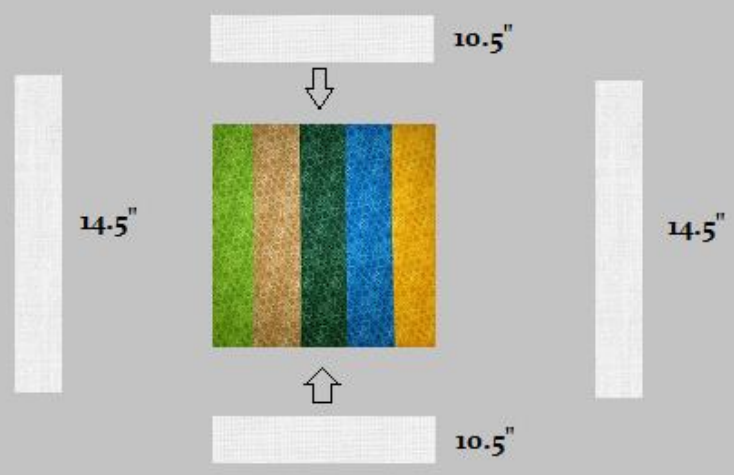
Baby: cut (16) 10.5" pieces each from 4 white, and 4 black. Cut (16) 14.5" pieces each from 6 white, and 6 black.

Throw: cut (26) 10.5" pieces from 7 white, and (24) 10.5" pieces from 6 black. Cut (26) 14.5" pieces from 9 white, and (24) 14.5" pieces from 8 black.

Queen/King: cut (50) 10.5" pieces from 13 white, and (48) 10.5" pieces from 12 black. Cut (50) 14.5" pieces from 17 white, and (48) 14.5" pieces from 16 black.

### Frame your blocks

Attach 10.5" strips to top and bottom of block, then 14.5" strips to both sides. Use white on one set of blocks, and black on the other.



Lay out blocks alternating black/white



If you like, you can alternate the direction of your strips in every other row.

Baby: make 4 rows of 4 blocks, 2 starting with white, 2 starting with black

Throw: make 5 rows of 5 blocks, 3 starting/ending with white, 2 starting/ending with black

Queen/King: make 7 rows of 7 blocks, 4 starting/ending with white, and 3 starting/ending with black

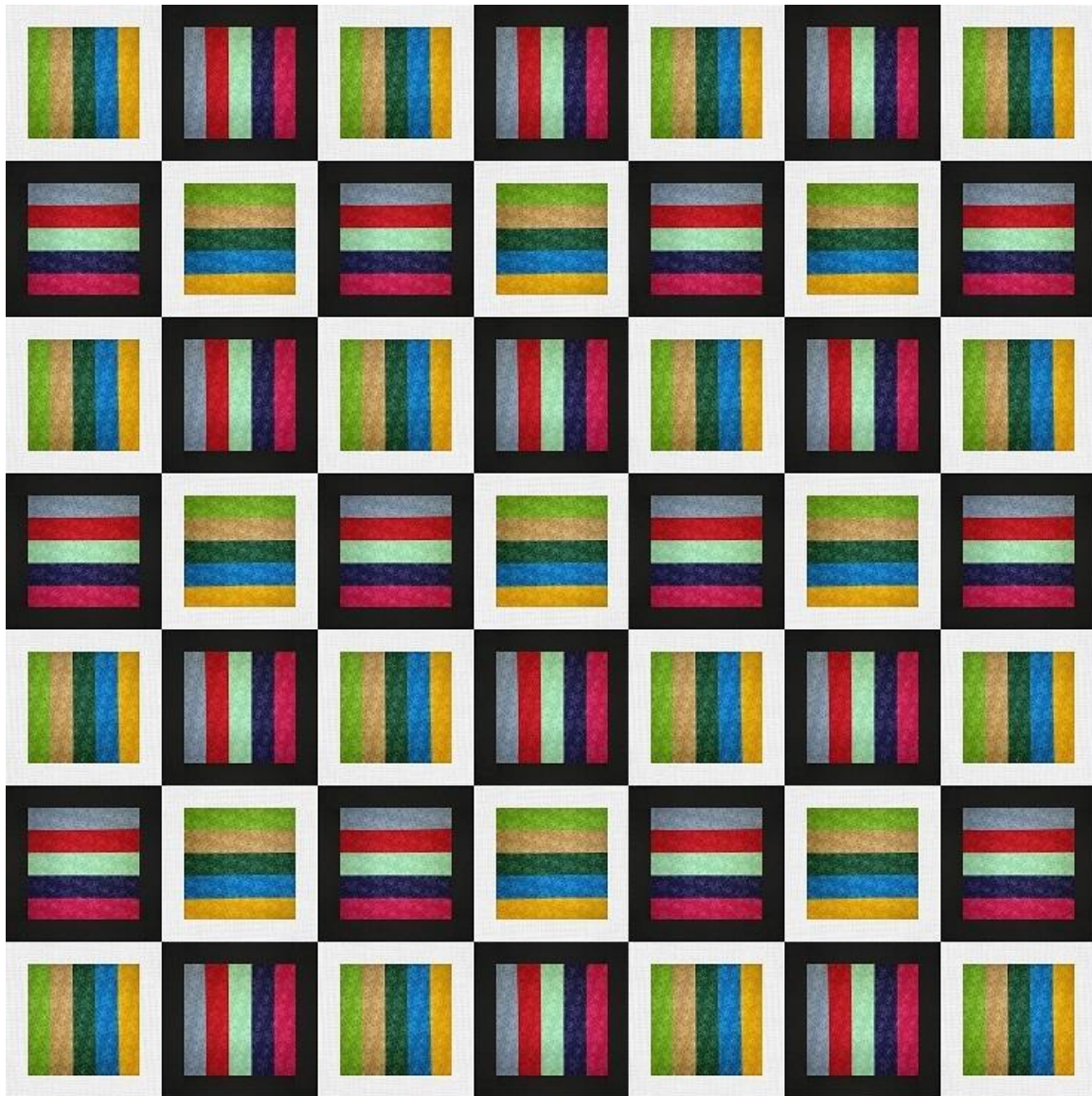
BABY – 56” x 56”



THROW – 70” x 70”



QUEEN – 98” x 98”



KING – 108” x 108”



Framed in [solid white yardage](#)

Hope you've enjoyed this little easy pattern!  
Come check out our [10-Colorway jelly roll section](#)  
for lots of options for your blocks and  
[white/black rolls](#) for the frames!

Liz K., <http://jellyrollfabric.net>

[Like us on Facebook!](#)

[Follow me on Pinterest!](#)