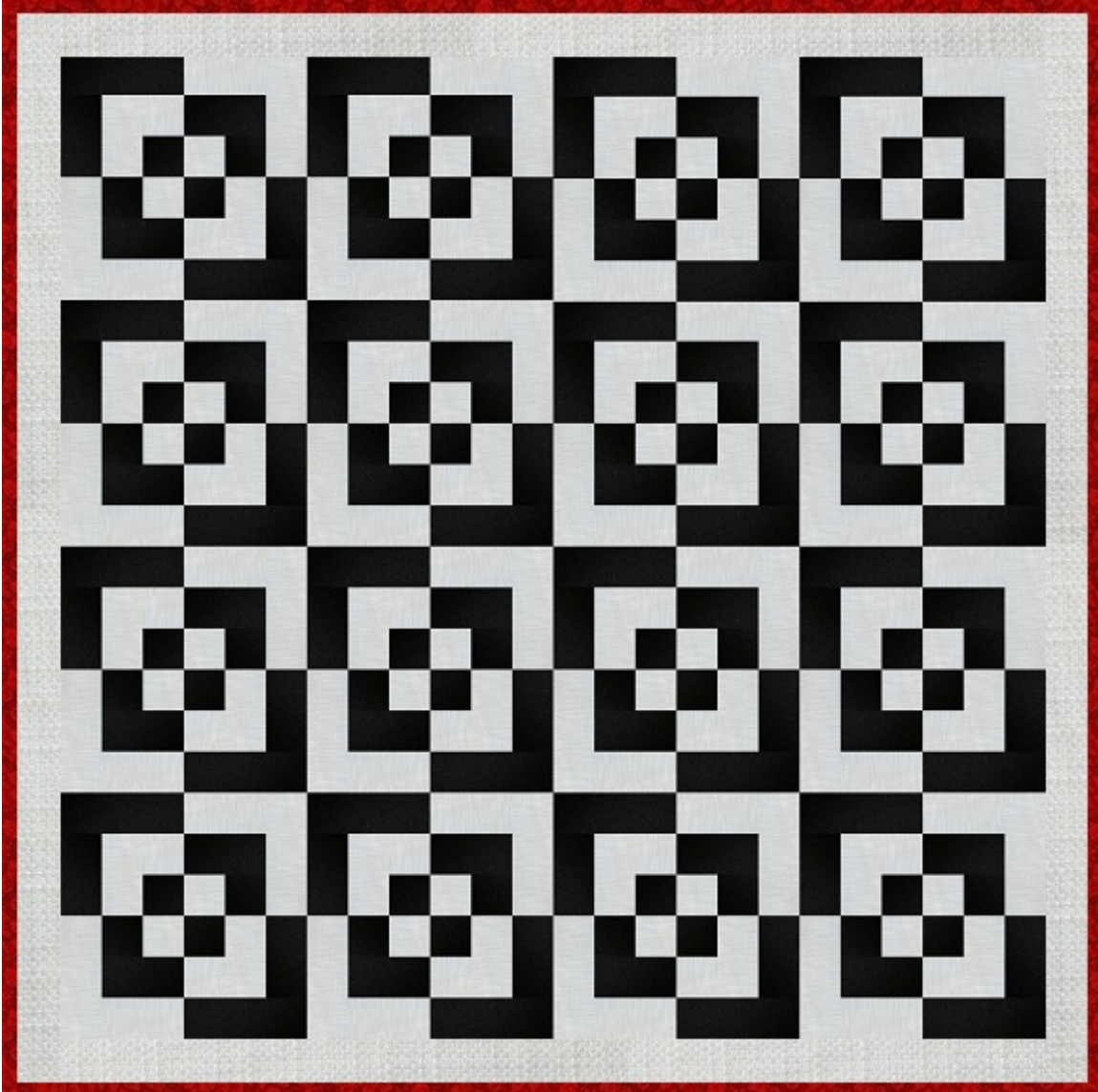


LOCK AND CHASE

By Liz Katsuro



This very easy quilt pattern is suitable for a brand new beginner!

Finished top: approx. 52" x 52" (throw size)

You'll need 16 solid black (or other contrast color) jelly roll strips and 24 solid white jelly roll strips. Optional: 8 colorful strips for binding

Get the solid strips shown here at <http://jellyrollfabric.net>:
[Solid Black Jelly Rolls](#) and [Solid White Jelly Rolls](#)

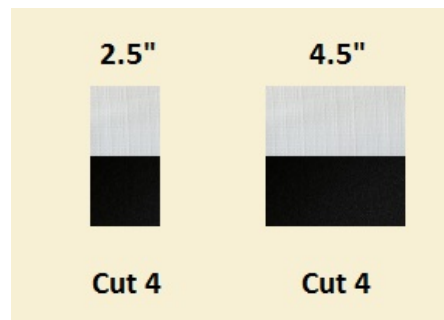
DIRECTIONS

Set aside 8 white strips for your border.

1. Cut (2) 6.5" pieces from 16 of your black strips, as well as 16 of your white strips. (You should end up with (32) 6.5" pieces of each color.) Set aside. You should have 16 solid black strips and 16 solid white strips measuring about 30" each left over.
2. Using sets of the remaining pieces, sew 1 black strip and 1 white strip together lengthwise. Continue until you have all 16 sets done. Press open toward the black strip.

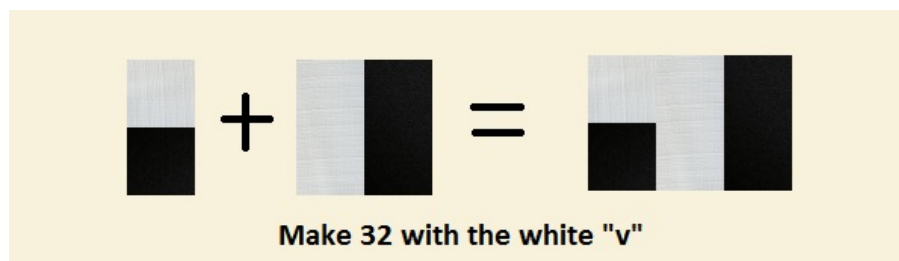


3. From each strip set, cut (4) 2.5" segments, and (4) 4.5" segments.

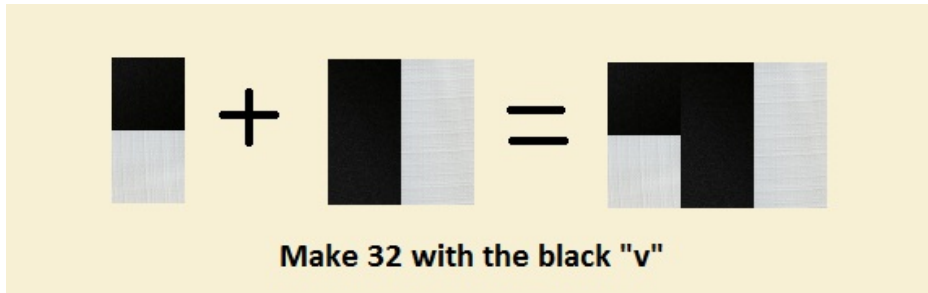


BLOCK ASSEMBLY (Take your time, or pay with the seam ripper!)

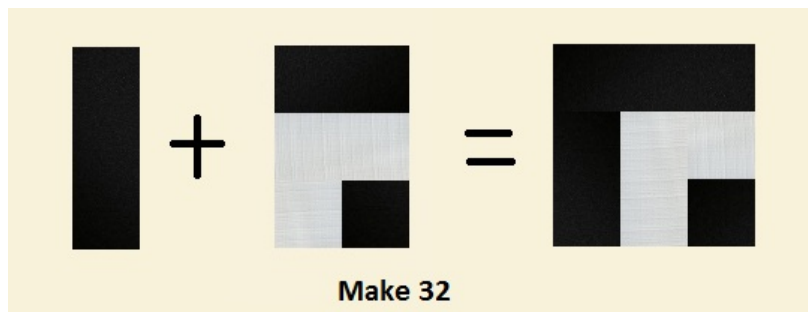
4. Sew 2-patch segment to 2-strip segment as shown below (so that you have a white "v") - make 32.



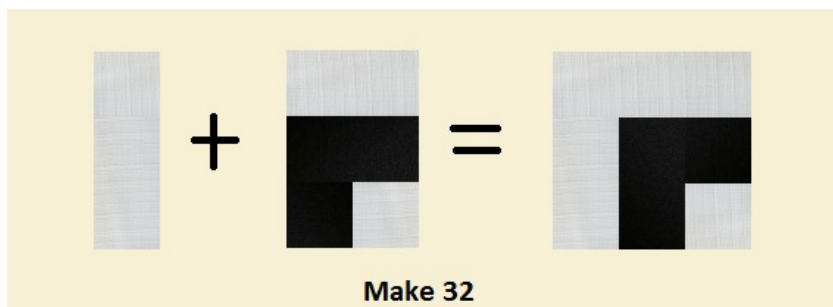
5. Sew 2-patch segment to 2-strip segment as shown below (so that you have a black "v")- make 32.



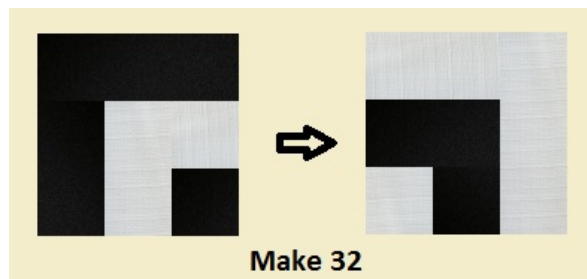
6. Sew 6.5" black strips to block segment as shown below - make 32.



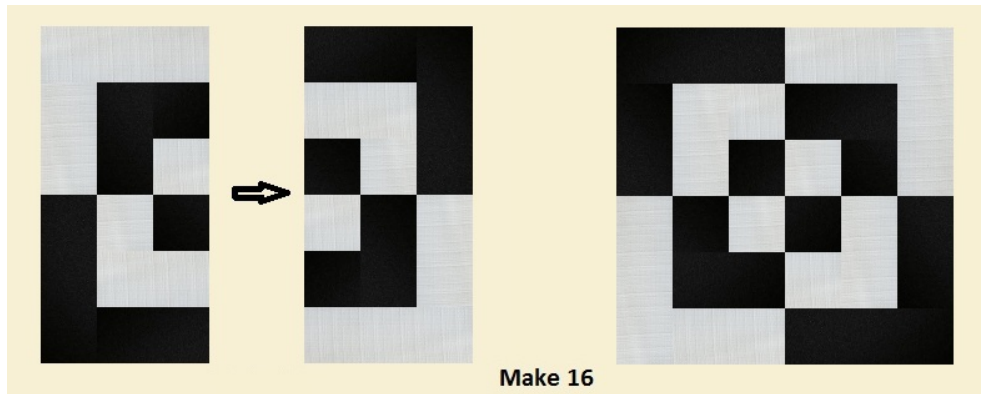
7. Sew 6.5" white strips to block segment as shown below - make 32.



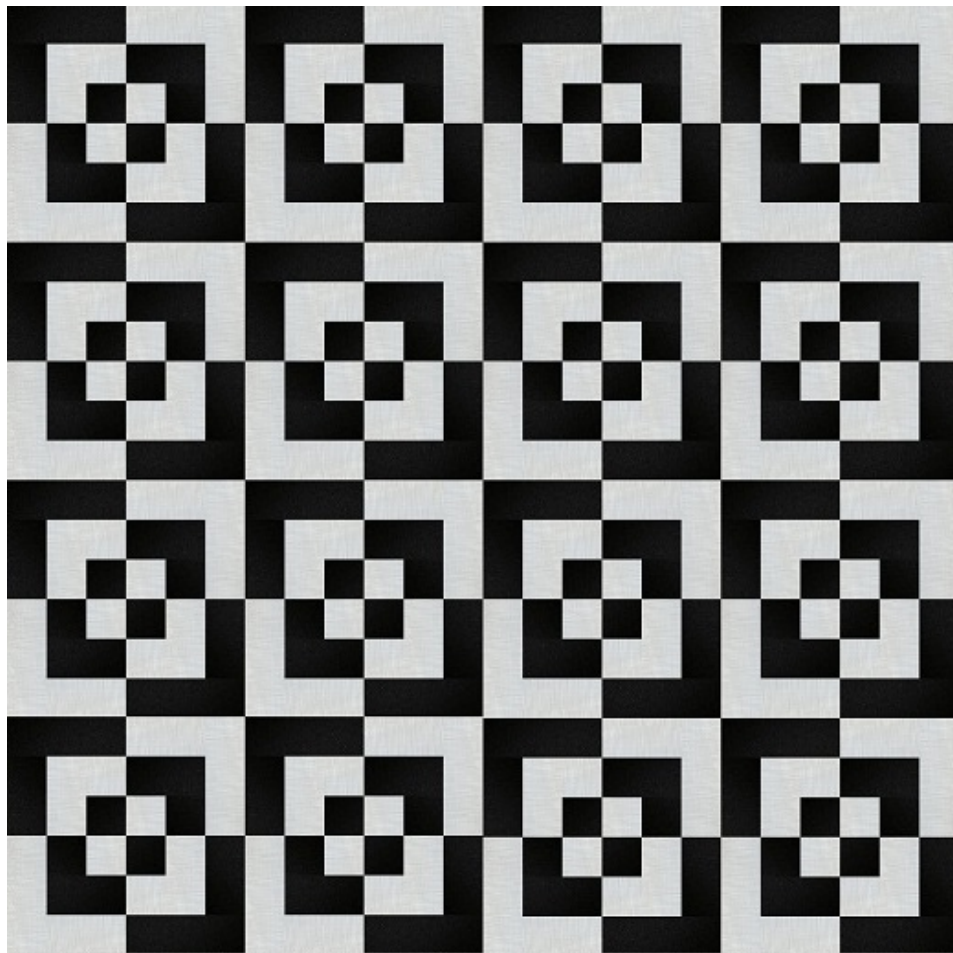
8. Attach left and right sides of block half. Make 32.



9. Finish blocks - you'll end up with 16.

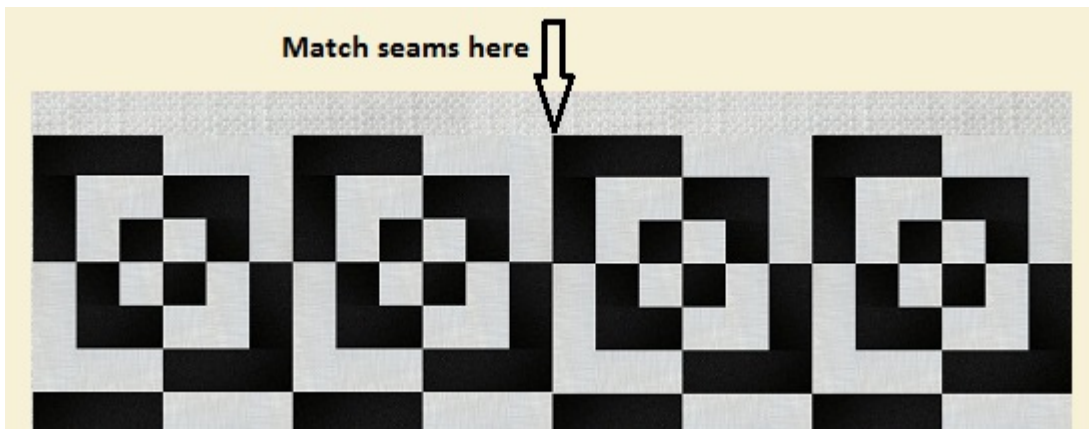


10. Assemble your top, setting your blocks 4 across and 4 down, all facing the same direction (black “arrows” pointing to the upper left is an easy way to remember). It’s a good idea to lay out all 16 blocks first and then sew one at a time in each row, etc. until all your rows are done. Take your time!



BORDER

11. Using your 8 white border strips, sew together pairs on the short ends to make 4 long white strips.
12. Using 1 long strip, match the seam in the border strip to the middle seam of your top edge. Pin in place, and attach going from the center out in one direction, then the center out in the other direction. Flip the quilt top and repeat on the opposite side first, then finish your other 2 sides in the same fashion.



Once quilted, choose a bright color for binding!